

BATOC RT 66 Meeting Notes 9-5-17

Route

BATOC High Level tasks and teams

```

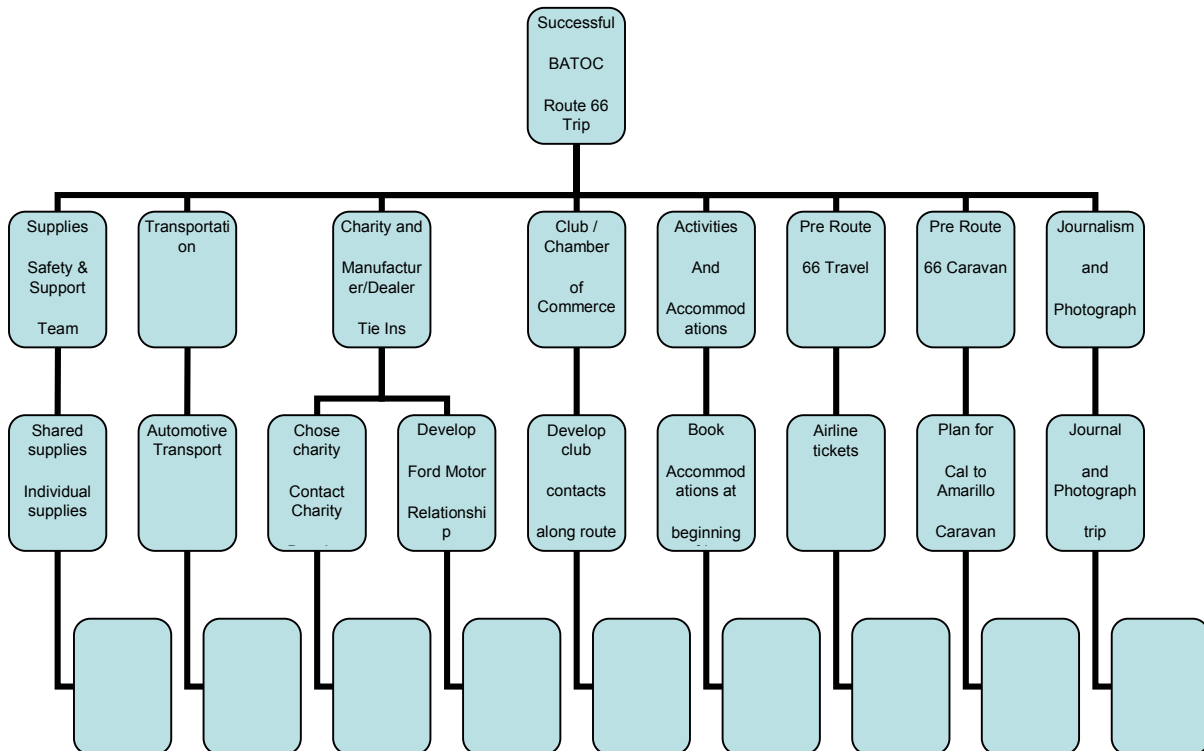
    graph TD
      Root[Successful BATOC Route 66 Trip] --> Team1[Supplies Safety & Support Team]
      Root --> Team2[Transportation]
      Root --> Team3[Charity and Manufacturer/Dealer Tie Ins]
      Root --> Team4[Club / Chamber of Commerce]
      Root --> Team5[Activities And Accommodations]
      Root --> Team6[Pre Route 66 Travel]
      Root --> Team7[Pre Route 66 Caravan]
      Root --> Team8[Journalism and Photograph]
      Team1 --> T1_1[Shared supplies]
      Team1 --> T1_2[Individual supplies]
      Team2 --> T2_1[Automotive Transport]
      Team3 --> T3_1[Chose charity]
      Team3 --> T3_2[Contact Charity]
      Team3 --> T3_3[Develop Ford Motor Relationship]
      Team4 --> T4_1[Develop club contacts along route]
      Team5 --> T5_1[Book Accommodations at beginning]
      Team6 --> T6_1[Airline tickets]
      Team7 --> T7_1[Plan for Cal to Amarillo Caravan]
      Team8 --> T8_1[Journal and Photograph trip]
  
```

DATE	CITY	HOTEL	# OF NIGHTS	MILES TO NEXT STOP	ESTD TIME
Overall Schedule 10/13 - 10/22/18				301	5 HOURS
10/13	AMARILLO	BIG TEXAN HOTEL	2	70	2.5
10/15	SANTA FE	LA FONDA HOTEL	1	140	2.5
10/16	ALBUQUERQUE	EL VADO	1	130	2.5
10/17	WINDLOW	LOS POSADA	1	150	2.5
10/18	WINDLOW	LOS POSADA	1	290	5-6
10/19	KINGSMAN	WIG WAM	1	113	3
10/20	SAN BERN	WIG WAM	1	200	4
10/21	SANTA MON	COURTYARD	1	300	5
10/22	SAN LUIS OB	MORNINGSTAR INN	1	300	5

POINTS OF INTEREST

CITY	ORGANIZER	CHICKEN	TIME NEEDED (not incl. travel)
AMARILLO	CUMMING/ADAMS/RELY	FORD DEALER CADILLAC RANCH AMARILLO CLUB	1 HOURS 1 HOUR
SANTA FE	JENKINS	LOS ALAMOS	2-3 HOURS
ALBUQUERQUE	VILLANUEVA	NUCLEAR MUSEUM HISpanic MUSEUM BUS TOUR "OLD TOWN" ALBUQUERQUE HOTEL SANDIA MOUNTAINS	2-3 HOURS
GALLUP	CUMMING / CANFIELD	PAINTED DESERT PETRIFFED FOREST & CONEYS	1-2 HOURS 1-2 HOURS
WINDLOW	GUTHRIE	WINDLOW CRATER 9/11 REMEMBRANCE "STANDING ON THE CORNER" OLD TRAILS MUSEUM	30 MINUTES 20 MINUTES 2 HOUR
GRAND CANYON	CANFIELD	POSSIBLE OVERNIGHT SIDE TRIP COULD BE SPINTER GROUP OVERNIGHT. MEETING BACK UP WITH GROUP IN KINGSMAN OR WE ALL STAY IN WINDLOW A SECOND NIGHT AND MAKE IT A DAY TRIP FROM WINDLOW	
KINGSMAN	????	POWER HOUSE RT 66 MUSEUM BEALE STREET MR. O'S DINER COOL SPRINGS	2 HOURS
SAN BERN	????	ORIGINAL McDONALDS WIG WAM HOTEL JUAN PALO MUSEUM	

High level tasks



BATOC RT 66 Meeting Notes 9-5-17

ROUTE 66 MEETING NOTES 9/9/17

Overview:

We have made good progress on the itinerary and much work is still going on. Much of this meeting was focused on in identifying next steps and setting other priorities. We identified multiple high level tasks the need focus or feedback. Special attention was given to the Charity, tie-in, external contact and club contact portions of the trip.

Notes:

Transport – Bud has found one additional transport but it was \$2100/car. The search continues.

The Cummins have a friend who transports cars frequently and will find the name of the company he uses. West Coast shipping <https://www.wcshipping.com/> (510) 236-3008, Mon- Fri 8-5, talk to Alex, mention Gary Larson.

Dealer tie-ins – Dave will work on developing dealer and manufacturer tie-ins

Charity – Dave will lead a committee to identify and develop the charity aspect of the trip.

Several charities were discussed:

- Foster Kids
- Native American children's school
- Antique car restoration school (McPherson College)
- Elder care
- Alzheimer research/care
- Red Cross
- Hurricane relief
- St Jude's Children's hospital

None was chosen. We had discussion around the public perception of our choice of charities and whether the charity could be too big to have interest in our mission. St Jude's was discussed at some length. No decision was made,

We discussed a Drive-a-thon approach where in contributors would commit some amount such as \$.25/mile to our chosen charity. No decision was made.

BATOC RT 66 Meeting Notes 9-5-17

Contributors discussed include:

- Ford
- Ford dealers
- NAPA Auto Parts

Communication:

We discussed contacting CTCI and other car clubs along the route to join us at the stopping points. Guy accepted the tack of finding and directly communicating with those organizations. Jean took a task to provide a write up for the Early Bird.

We noted the need to develop a way to accept donations for our charity on-line while insuring all proceeds go direct to the charity. We also need to develop a mechanism to accept Cash donations.

We agreed that a “live” on-line BATOC route 66 tracking mechanism is needed. This idea needs development.

We discussed windshield flyers a way to solicit donations along the trip.

Safety:

The committee discussed the need for live car to car communications during the trip. Notes was the distance limitation of the walkie-talkies and the limitation of celular coverage as will as its inability to communicate to the group simultaneously.

A decision was made to require drivers to carry a CB radio such as this \$79 [Midland integrated kit](#) or this \$38 [Uniden PRO505XL 40-Channel Bearcat Compact](#) with external antenna

Schedule:

The committee agreed to move the schedule one week earlier to help avoid weather issues and allow us to be in ABQ during the balloon festival. This is contingent on getting hotel space in Santa Fe and ABQ for the dates below.

Revised I Schedule 10/5 – 10/15/18

<u>DATE</u>	<u>CITY</u>	<u>HOTEL</u>	<u># OF NIGHTS</u>	<u>From here to NEXT STOP</u>	<u>EST'D TIME</u>
5-Oct	AMARILLO TX	BIG TEXAN MOTEL	2	301	5
7-Oct	SANTA FE NM ALBUQUERQUE	LA FONDA HOTEL	1	70	1.5
8-Oct	NM	RT 66 OR EL VADO	1	140	2.5
9-Oct	GALLUP NM	EL RANCHO	1	130	2.5
10-Oct	WINSLOW AZ	LOS POSADA	1	91	2
11-Oct	Williams AZ		1	113	2

BATOC RT 66 Meeting Notes 9-5-17

12-Oct	KINGMAN AZ		1	290	5-6
13-Oct	SAN BERN CA	WIG WAM	1	113	3
14-Oct	SANTA MON CA	COURTYARD	1	200	4
15-Oct	SAN LUIS OB CA	MONDONNA INN	1	300	5

Committees:

Formalize committees and members for the high level tasks:

- Supplies, Safety & Support Team
 - Jim, ?, ?
- Transportation
 - Bud
- Charity and Manufacturer/Dealer Tie Ins
 - Dave, Guy, ??
- Club / Chamber of Commerce Contacts
 - Guy, ?, ?
- Activities And Accommodations
 - Amarillo, Santa Fe, ABQ, Gallup, Winslow, Grand Canyon, Kingman, and San Bernardino as assigned below
 - Need volunteers for Santa Monica and San Luis Obispo
- Pre Route 66 Travel
 - ?, ?
- Pre Route 66 Caravan
 - Roger, ?, ?
- Journalism and Photograph
 - ?, ?
- Other
 - ?, ?

To-Do

On OCT 9 & 10 Book reservations for La Fonda in Santa Fe and Rt66 or El Vado in ABQ

BATOC RT 66 Meeting Notes 9-5-17

POINTS OF INTEREST

We added Oatman, AZ to the list of wanna-sees

[Oatman Info](#)

(below unchanged)

<u>CITY</u>	<u>ORGANIZER</u>	<u>CHOICES</u>	<u>TIME NEEDED (Not incl. travel)</u>
AMARILLO	CUMMINS/ADAMS/RILEY	FORD DEALER CADILLAC RANCH AMARILLO CLUB	5 HOURS 1 HOUR
SANTA FE	JENKINS	LOS ALAMOS	2 – 3 HOURS
ALBUQUERQUE	VILLANUEVA	NUCLEAR MUSEUM *** INDIAN MUSEUM BUS TOUR “OLD TOWN” ALBUQUERQUE HOTEL SANDIA MOUNTAINS	2 – 3 HOURS
GALLUP	CUMMINS / CANFIELD	PAINTED DESSERT PETRIFIED FOREST 4 CORNERS	1 – 2 HOURS 1 – 2 HOURS
WINSLOW	GUTHRIE	WINSLOW CRATER 9/11 REMEMBERANCE “STANDING ON THE CORNER” OLD TRAILS MUSEUM	30 MINUTES 20 MINUTES 1 HOUR
GRAND CANYON	CANFIELD	POSSIBLE OVERNIGHT SIDE TRIP COULD BE SPLINTER GROUP OVERNIGHT, MEETING BACK UP WITH GROUP IN KINGMAN OR WE ALL	

BATOC RT 66 Meeting Notes 9-5-17

STAY IN WINSLOW A SECOND NIGHT AND MAKE IT A DAY TRIP FROM WINSLOW.

WILLIAMS ????

?????

KINGMAN ????

POWER HOUSE
*** RT. 66 MUSEUM 2 HOURS
BEALE STREET
MR. D'S DINER
COOL SPRINGS

SAN BERN ????

ORIGINAL McDONALDS
WIG WAM HOTEL
JUAN PALO MUSEUM